

Yao (Nancy) Ji

Architecture Portfolio

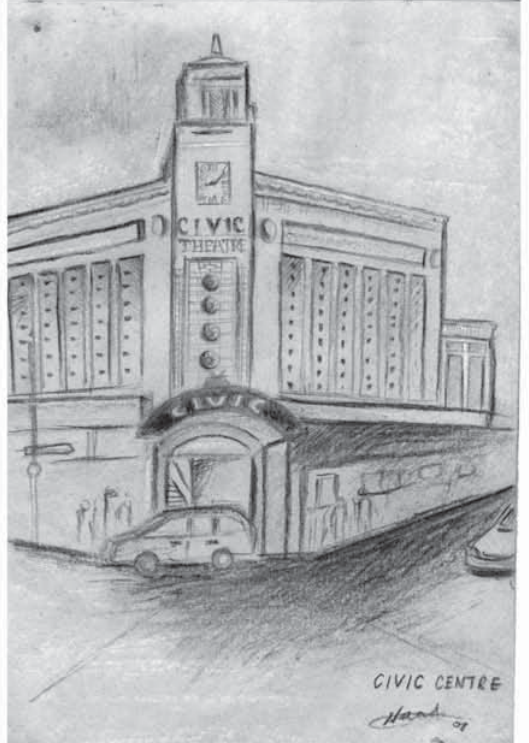
Bachelor of Architectural Studies

University of Auckland

New Zealand

2010

drawing
freehand sketches



drawing



curiosity. pencil, brown crayon and black marker on card. 38cm x 50cm. personal. 2008.

detail

drawing
2008

illustration



Interior study. marker, fine line pen and colour pencil on paper. 42cm x 60cm. 2008.



Office building. water colour on paper. 30cm x 42cm. 2008.



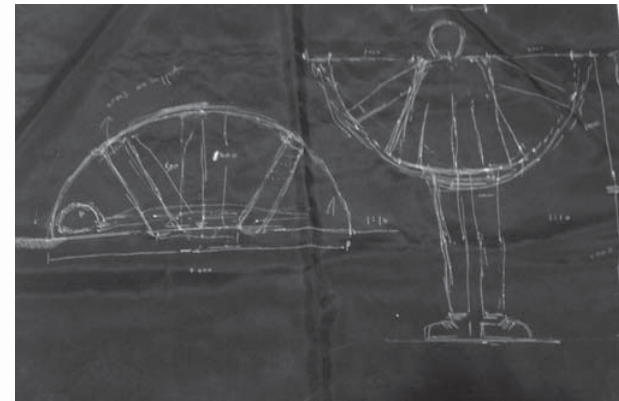
prototype

Body Architecture

The Human tent

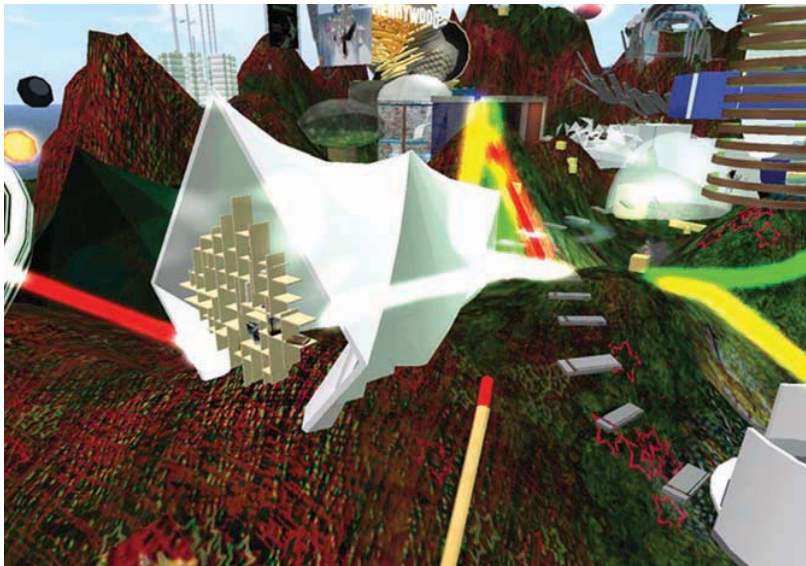
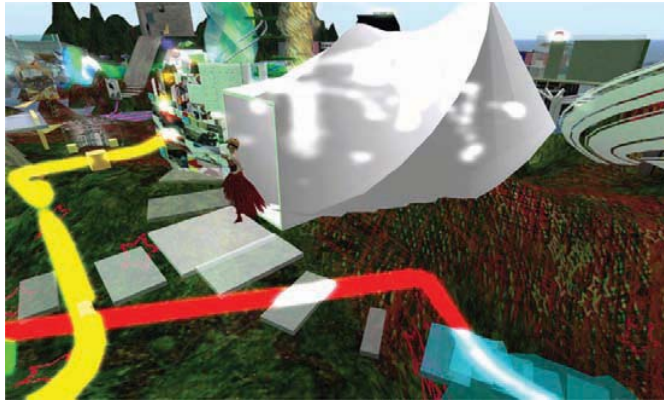
Brief: To design an emergency dwelling for two backpackers to protect them from swine flu.

Inspired by Lucy Orta's 'Refuge Wear'; the Human tent is a portable habitat that transforms from clothing to shelter and vice versa. The garment forms a protective layer which protect the from wearer coming into contact with the virus, while at the same time can be set up into a tent when shelter is needed allowing the backpackers to carry on with their journey in the outside world. This trnsformation is fundamental to the concept of freedom, free will and freedom of movement.



working sketch

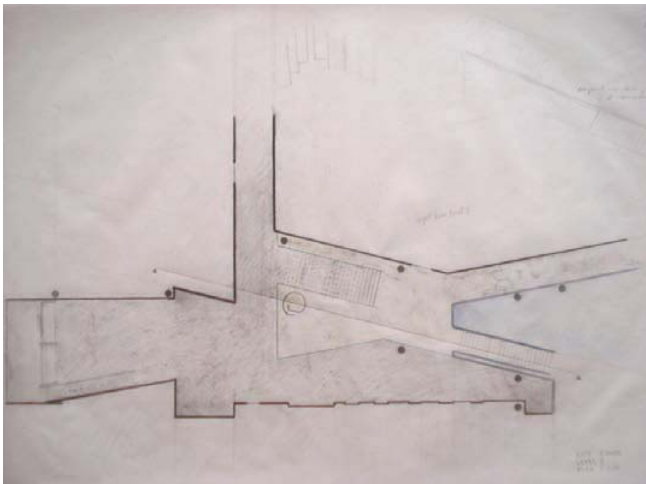
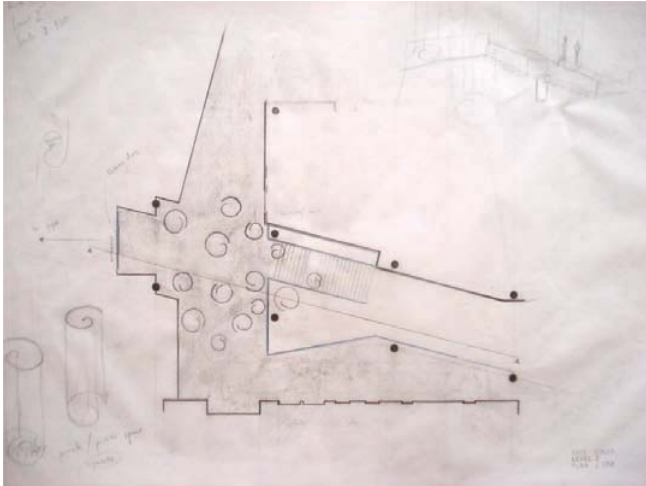
3D modelling



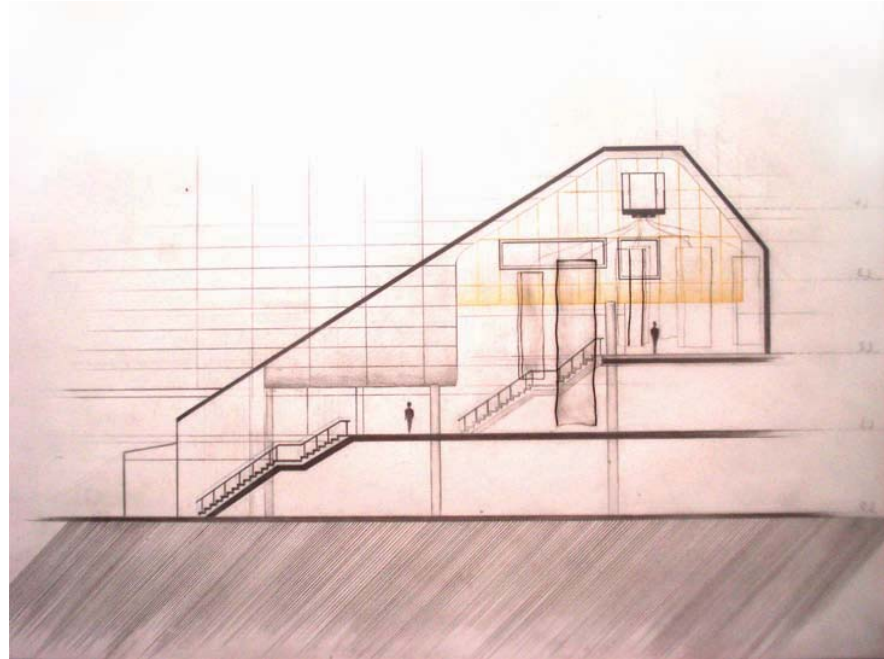
Using the virtual world of Second Life as a tool to build and design a virtual library that links to architecture journals of interests as a resource for fellow students.



bookshelf in the making



1:100 plan drawings. pencil on film. 42cm x 60cm.



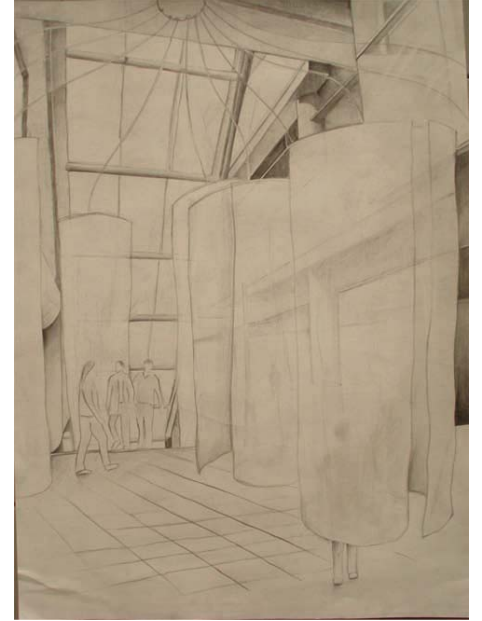
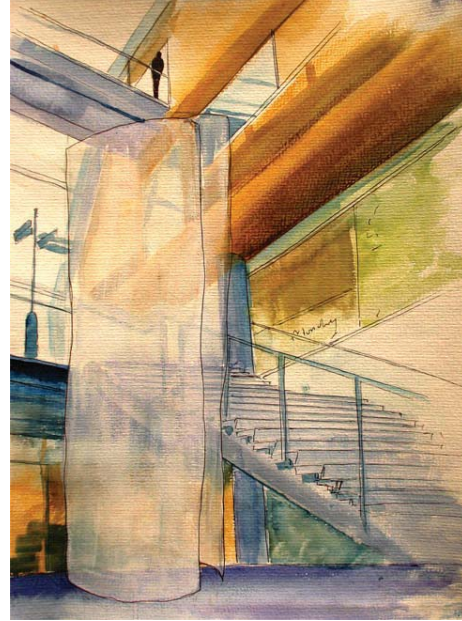
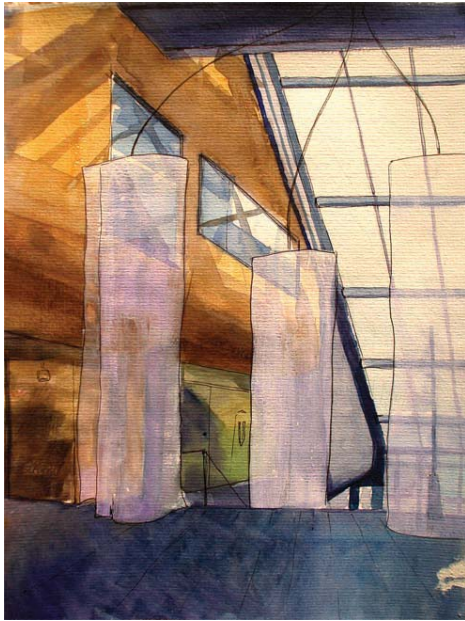
1:100 section drawing. pencil on film. 42cm x 60cm.

Intervention

Public and private space

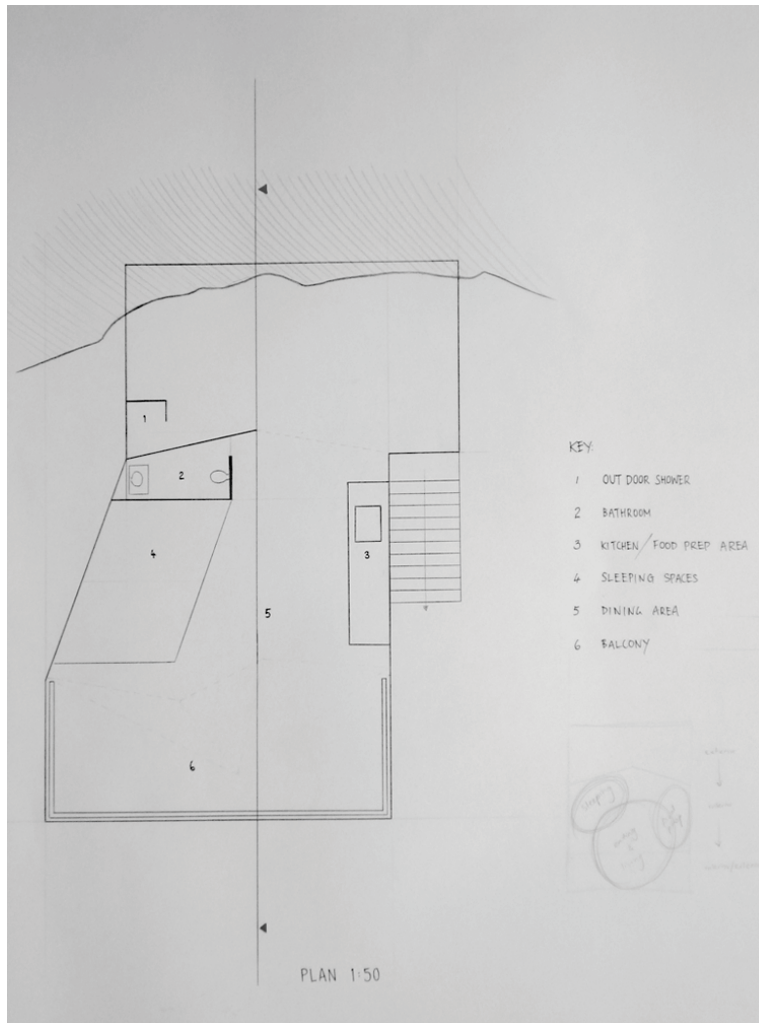
Brief: To design an 'In-Habitable' intervention to be placed in the Kate Edgar building that explores the realm of public and private.

The existing Kate Edgar building is a busy place with a constant influx of people. My intervention comes in the form of a series of fabric structures that are cylindrical in shape, hung from the level 4 bridge. These structures create a temporary inhabitable space allowing a moment of pause amongst all the movement. The structure is spiral in shape which invites users through the opening, blurring the transition from outside to inside. The realm of public and private spaces are challenged due to the transparency of the fabric which only shows the silhouettes of figures.



watercolour and pencil interior renderings for *Intervention*. 42cm x 60cm.

Bach (holiday home)



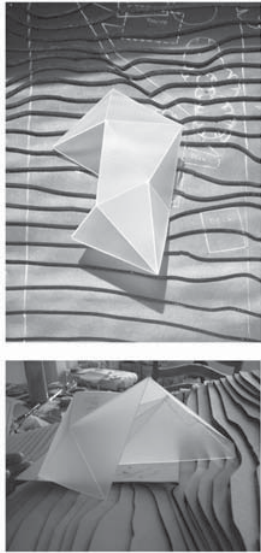
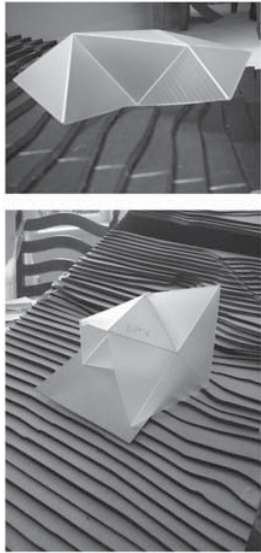
1: 50 plan and section drawings. pencil on paper. 42cm x 60cm



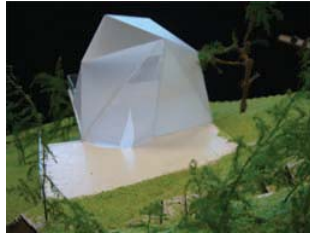
Brief: To design a bach for a couple and their young son situated on a steep hill on Waiheke Island. The couple see the bach as a retreat; a place to escape from the busy life of the city. They want the bach to be cozy for the three of them but also able to expand to accommodate for friends and family.

Solution: I have based the design of the house on a tent. Tents are strongly associated with nature and outdoors; not your conventional type of dwelling in the city. The plan is open and flexible with only service cores (bathroom and kitchen) fixed. It is divided into three parts: 1) eating area 2) food preparation area 3) sleeping area, as opposed to a set allocation of a number of rooms. All areas connect and overlap under one roof creating unity and intimacy within the family. The sleeping area can be defined by drawing a series of curtains which create two partitions. These curtains can be drawn back during the day to maximize living space. In bad weather, a tent like fabric cover can be drawn over the balcony to keep out the rain. The balcony itself acts as a viewing deck, providing an unobstructed view into the wild bush.

model of Bach



working models



1:50 final model

